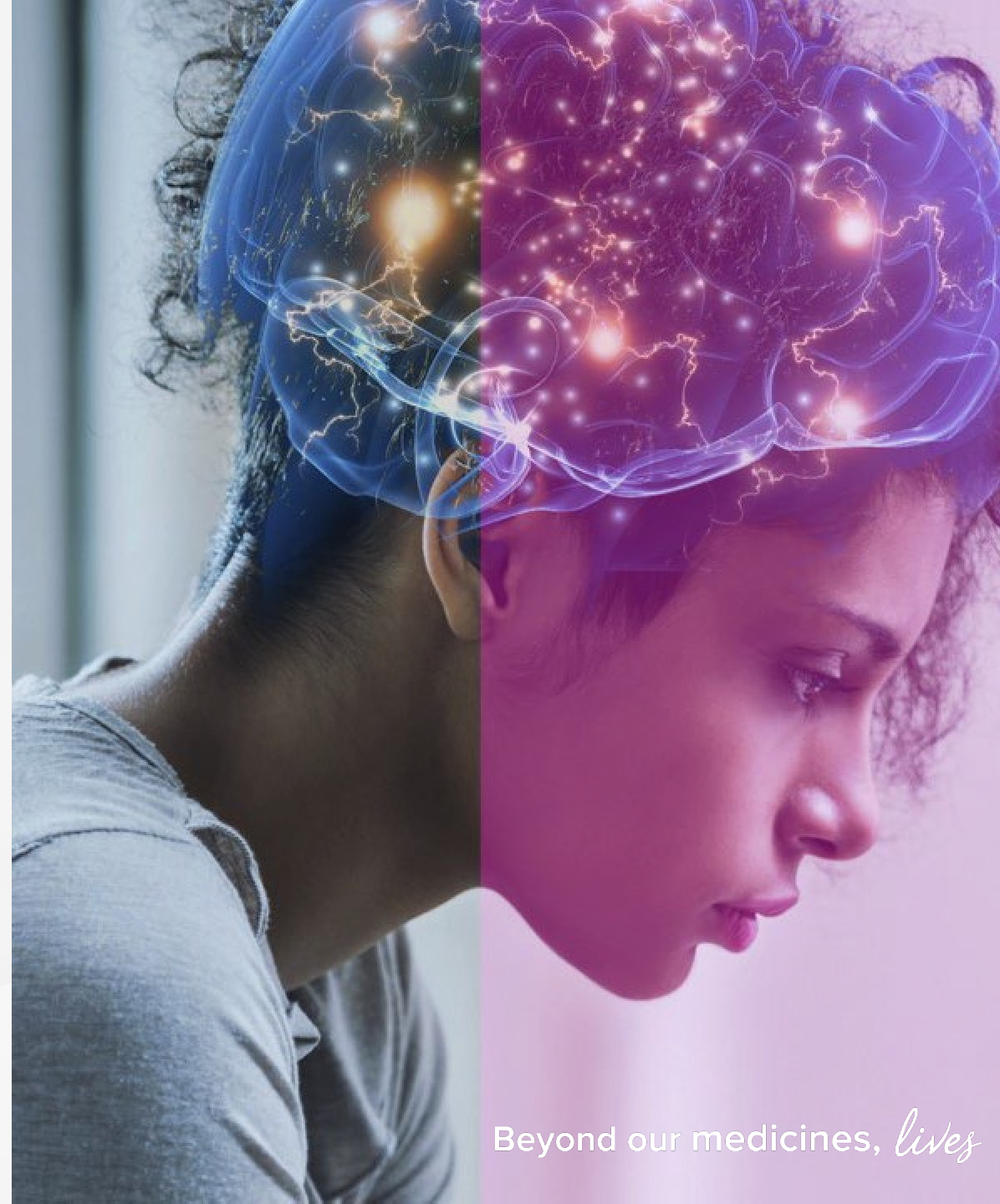




*Beyond our Medicines, Lives.....*

THE ZAMBIA MEDICAL ASSOCIATION 2024 AGM & SCIENTIFIC CONFERENCE  
30/08/2024

Obbie Musunga Chomba



Beyond our medicines, *lives*

# Outline

- ❖ **Strategy**
- ❖ **Ethypharm Heritage**
- ❖ **Inspiration**
- ❖ **What Ethypharm Mean**

# Vision

*Leading global mid-size pharmaceutical company that manufactures and provides essential drugs with profitable growth*

# Mission

*Ethypharm mission is to improve patients' lives by developing and delivering affordably essential medicines, promoting sustainability and social responsibility, partnering with healthcare professionals for their patients and contributing to a healthier society.*

# Our Héritage of Innovation



**MARTINDALE PHARMA**  
An Ethypharm Group company

1866



U.K.

1977



France



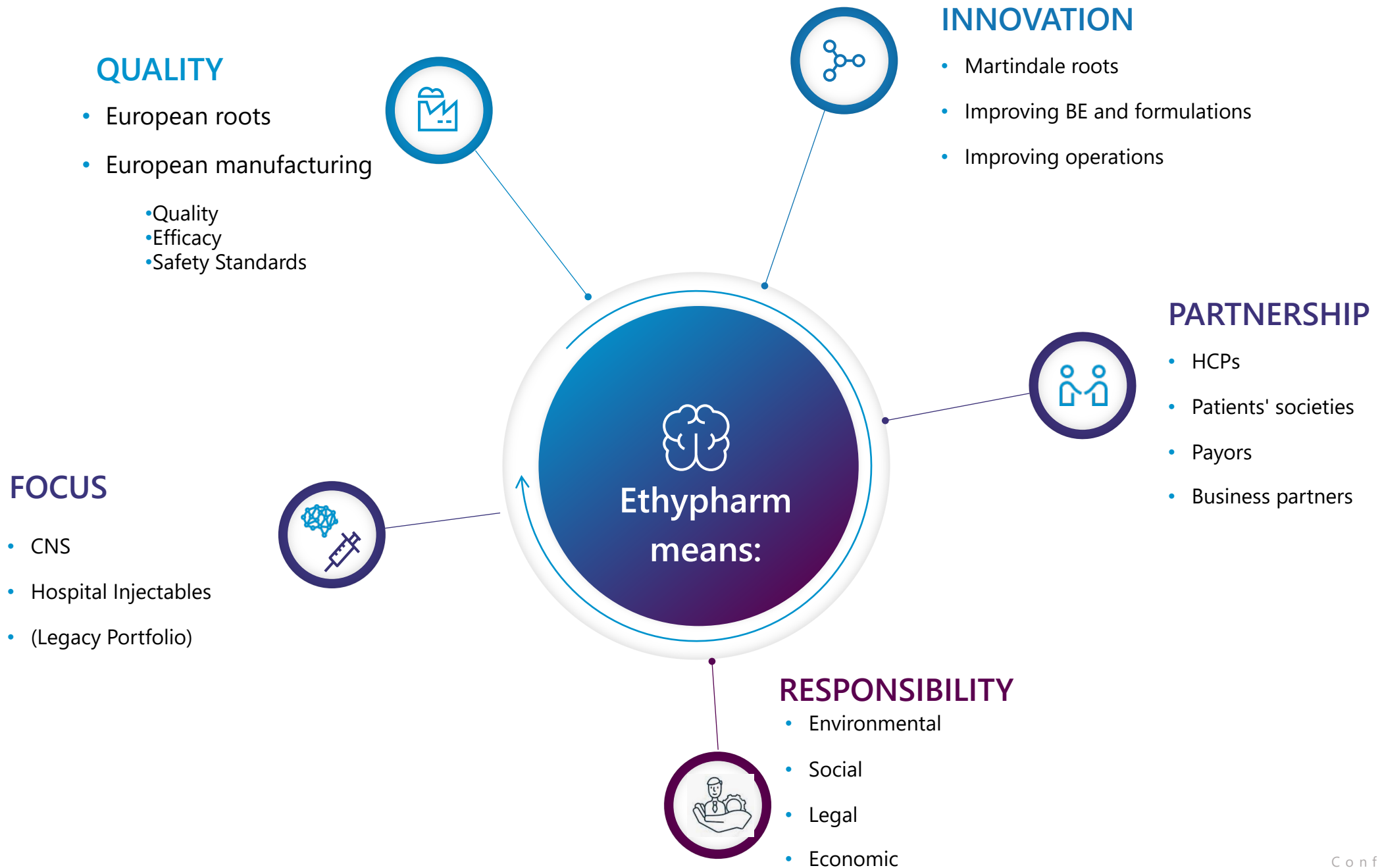
1998



Spain

- **William Martindale** was a renowned figure in the pharmaceutical industry in the 19th century.
- He was born in 1840 in the United Kingdom and began his interest in pharmaceuticals as an apprentice to his chemist and druggist great uncle in 1856.
- William went on to pass his Pharmaceutical Society exams in **1866** and bought a pharmacy on New Cavendish Street in London.
- He became immersed in the pharmaceutical world and frequently published in the Pharmaceutical Journal





# Product Range

## **1. Caffeine Citrate Injection–AOP**

2. Pethidine 50mg & 100mg Injection

3. Morphine Injection

4. Fentanyl Injection

5. Ephedrine Injection

6. Suxamethonium Injection

7. Magnesium Sulphate

## **8. Glycopyronium**

9. Atropine Injection



## Contact

Follow us |



---

For any partnership opportunity,  
contact the Business Development  
& In-licensing team

[partner-with-us@ethypharm.com](mailto:partner-with-us@ethypharm.com)

---

Find out more about  
Ethypharm

[www.ethypharm.com](http://www.ethypharm.com)



# Thank you.

Workplace

Workplace

Workplace



Ethypharm